

Note: 229-100-21
can only be used vertically

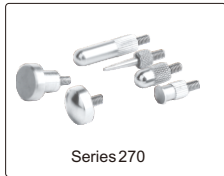


- ◆ Graduation: 0.01mm
- ◆ With limit hands
- ◆ Rang per revolution: 1mm
- ◆ Supplied with lug and flat back

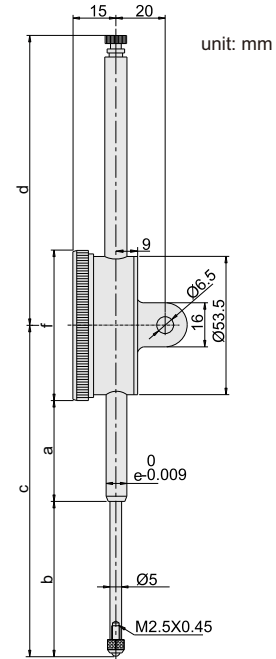
Stem clamp Ø10mm
for 229-100-21 (included)



Styli (optional)



Application



INDICATOR

Code	Range	Accuracy	Hysteresis	Scale	a	b	c	d	e	f
229-050-21 *	50mm	40µm	8µm	0-100	40	58	127	108	Ø8	Ø58
229-100-21	100mm	50µm	9µm	0-100	60	108	207	168	Ø10	Ø78

* With manufacturer inspection certificate