

**SERIES RP100XS**

**PROFILE AND ROUGHNESS MEASURING MACHINE**



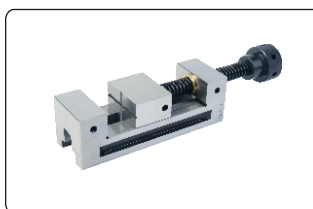
- ◆ Measure the surface profile and roughness with same probe at same time(for **RP100RS**)
- ◆ With high precision and good linearity digital probe(for **RP100RS** and **RP100TS**)
- ◆ Easy to install and replace without calibration
- ◆ Stylus can contact, lift and return automatically
- ◆ CAD file can be exported and imported(for **RP100RS** and **RP100JS**)
- ◆ With manufacturer inspection certificate



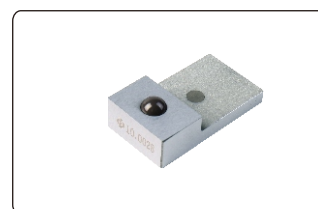
**RP100RS**



stage



vice



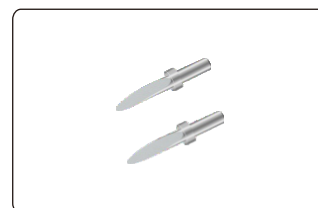
profile calibration block  
(for **RP100RS** and **RP100JS**)



roughness calibration block  
(for **RP100RS** and **RP100TS**)



Φ3\*20mm point stylus



Φ3\*21mm knife stylus

**SPECIFICATION**

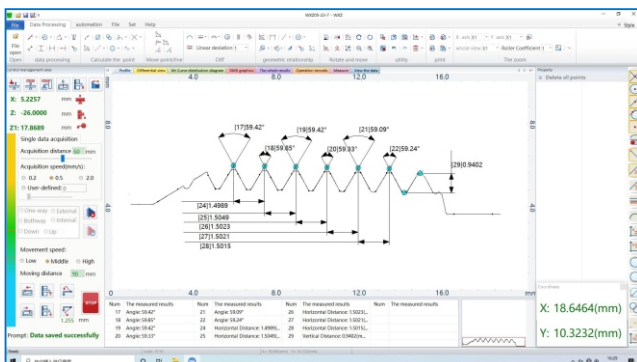
Code		RP100RS	RP100TS	RP100JS
Measuring object		profile and roughness	roughness	profile
Roughness parameter		Ra, Rq, Rz(Ry), R3z, Rz(DIN), Rz(JIS), Rz(ISO), Rp, Rv, Rt, Rsk, Rsm, Rc, Rpm, Rku, Rdq, Roc, Mr1, Mr2, Rpk, Rvk, Rk, Rdc, A1, A2, R, Rx, AR, Rcp, Rmax		\
Wave parameter		wt, wa, wp, wv, wq, wc, wku, wsk, w, wx, wz, wsm, wdc, wte, wmr, Aw, c(wmr), wmr(c), wdq		\
Profile parameter		Pt, Pa, Pp, Pv, Pq, Pc, Pku, Psk, Pdq/p△q, Psm, Pdc, Pmr(c), Pz, pmr, C(pmr)		\
Profile	X axis range	100mm	\	100mm
	X axis straightness	0.8μm/100mm	\	0.8μm/100mm
	Z axis range	650mm	\	650mm
	Z1 axis range (probe)	40mm	\	40mm
	Accuracy	±(1+0.12H)um, H is measuring height in mm		±(1+0.12H)um, H is measuring height in mm
	Measuring arc accuracy	±(1.5+R/8)um, R is measuring radius in mm		±(1.5+R/8)um, R is measuring radius in mm
	Measuring angle accuracy	±2'		±2'
Roughness	Z1 axis range (probe)	40mm	20mm	\
	Accuracy	±5%		\
	Repeatability	±3%		\
	Resolution	0.0001um		\
	Number of cut-offs	3-7		\
	Cut off	0.025, 0.08, 0.25, 0.8, 2.5, 8mm		\
Climbing ability		77°(up), 88°(down)		
Measuring speed		0.02mm- 4.0mm/s		
Measuring mode		probe movement		
Movement control		joystick		
Power supply		220V		
Size		985x710x1450mm		

**INCLUDED ACCESSORIES**

Main unit	1pc
Profile calibration block(for RP100RS and RP100JS)	1pc
Roughness calibration block(for RP100RS and RP100TS)	1pc
Stage	1pc
Vise	1pc
Φ3x21mm R0.025mm knife stylus	2pcs

Φ3x20mm R5μm point stylus	1pc
Φ8x150mm measuring rod	1pc
Computer	1pc
Printer	1pc
Anti-dust cover	1pc

**Measuring profile**



**Measuring roughness**

