

SERIES 218

WIRELESS HIGH PRECISION DIGITAL INDICATOR



ACCUD



- ◆ Built-in wireless transmission, Zigbee signal
- ◆ Built-in bluetooth
- ◆ Absolute encoder, the original data remains after power off
- ◆ Reading in digital and analog
- ◆ Supplied with RS232 cable (with software)
- ◆ Button: data output, tolerance, data preset, data hold, measuring direction change, max./min./TIR, power off time, on/off, mm/inch, resolution adjustment
- ◆ Power: rechargeable battery, for 24 hours continuous working(full charge)



218-010-01W



218-025-01W

unit: mm



VIDEO

Lifting lever (Included)



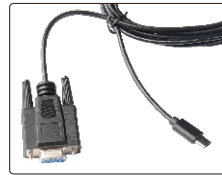
display can be rotated by 320°



Blue tooth

Smart phone, Ipad

RS232 cable (Included)

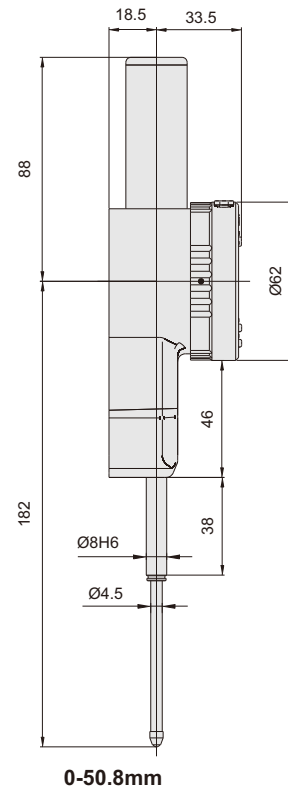
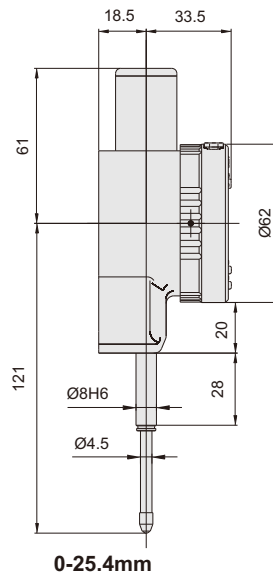
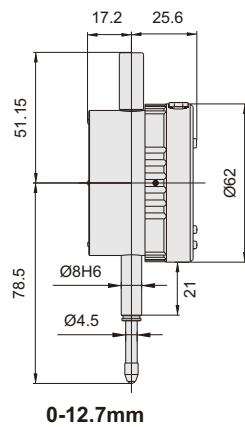


Contact points (optional)



Series 270

Application



Code	Range	Resolution(adjustable)	Accuracy	Hysteresis	Styli	Back
218-010-01W	12.7mm/0.5"	0.0002mm/0.00001"	1.5µm	1µm	Ruby	flat
218-025-01W	25.4mm/1"	0.001mm/0.00005" 0.01mm/0.0005"	1.8µm	1µm	Ruby	flat

Code	Range	Resolution(adjustable)	Accuracy	Hysteresis	Styli	Back
218-010-11W	12.7mm/0.5"	0.0005mm/0.00002"	3µm	1.5µm	Carbide	flat
218-025-11W	25.4mm/1"	0.001mm/0.00005" 0.01mm/0.0005"	3µm	1.5µm	Carbide	flat
218-050-11W	50.8mm/2"	0.01mm/0.0005"	3µm	1.5µm	Carbide	flat

INDICATOR